



# DESIGN IDEATION PORTFOLIO

NAME: JAIME ECHEVARRIA CORRALES

STUDENT ID: 2031821

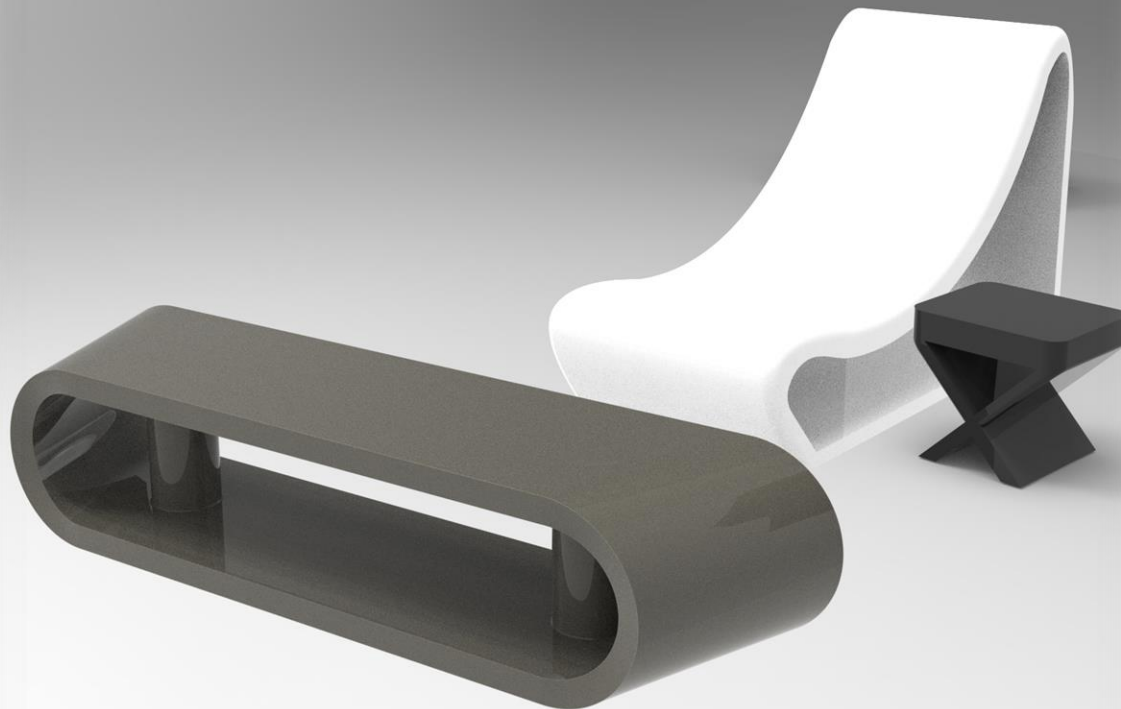
YEAR: 2022

MODULE COORDINATOR: MR BRUCE VALLER

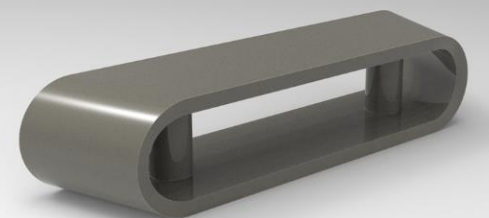
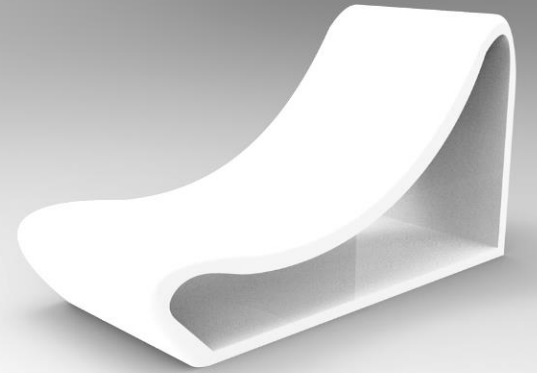
# TABLE OF CONTENTS

- ORGANIC FURNITURE
- ANGLEPOISE LAMP
- ANGLEPOISE PENDANT LAMP
- RAY MARINE
- TOY DESIGN

# ORGANIC FURNITURE



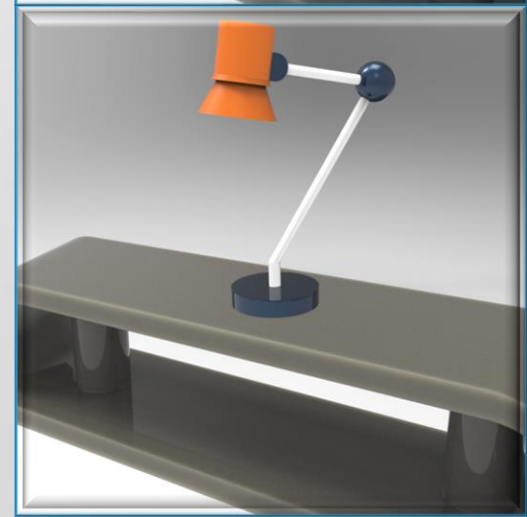
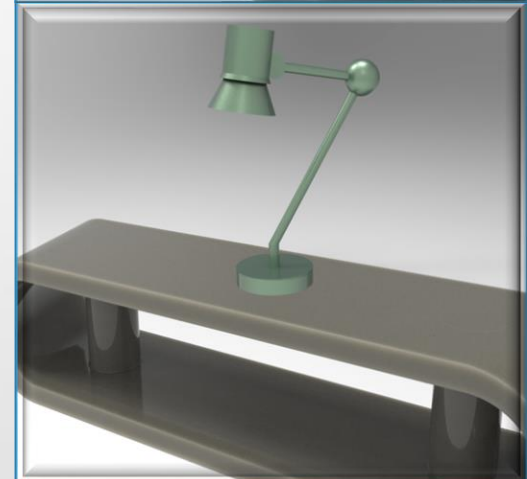
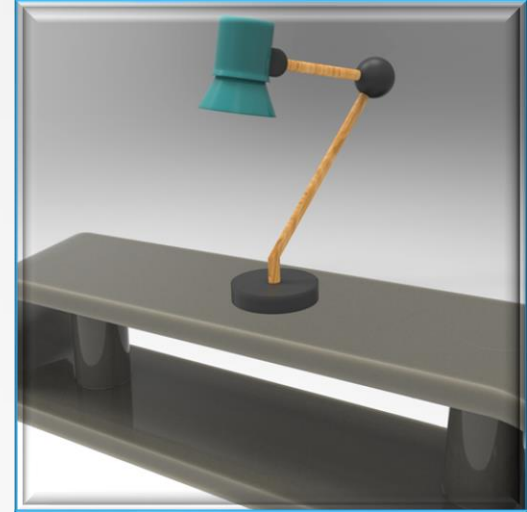
3 different types of furniture based on organic beings. You can appreciate the curved and natural forms, as well as the simplicity. Created through green and sustainable materials. They will give your living room the modern touch that many people are looking for today



# ANGLEPOISE LAMP



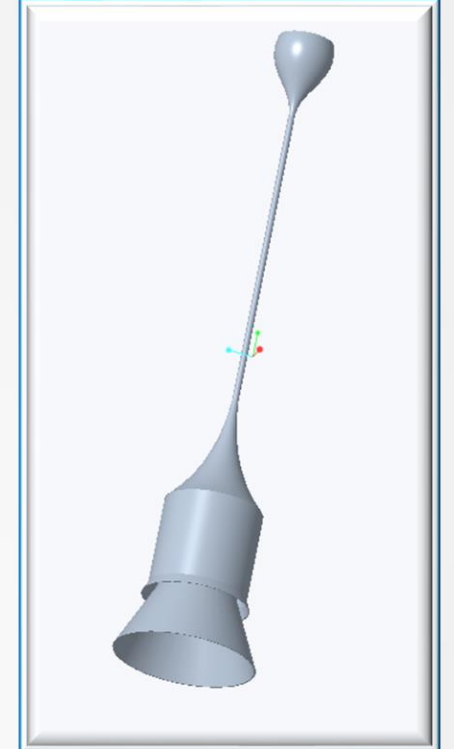
This lamp inspired by the type 80 of the historic Anglepoise brand, is made with low-polluting materials and has the characteristic of being able to rotate on its upper axis (sphere) 90 degrees. In this way expanding the comfort when interacting with the lamp.



# ANGLEPOISE PENDANT LAMP



Pendant lamp inspired by the type 80 of the historic brand Anglepoise. Made of reliable and ecological materials, this section of pendant lamps provides a beautiful impression of the room in which it is installed as well as good lighting.

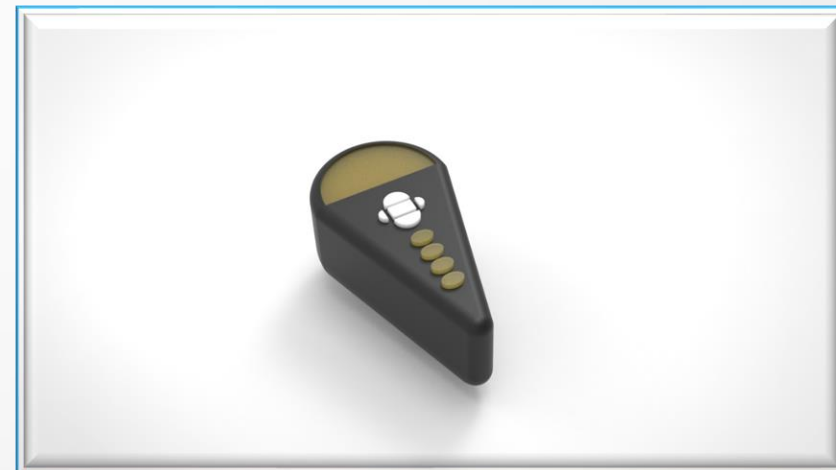
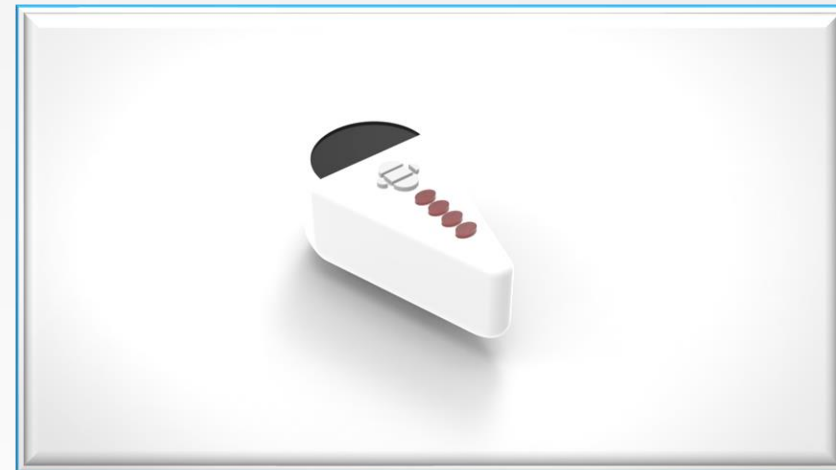




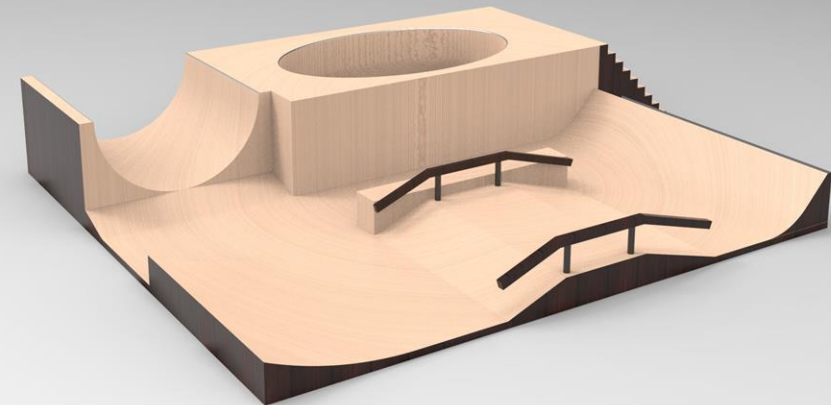
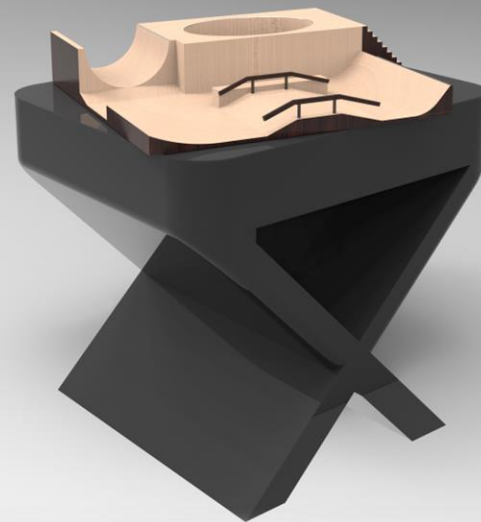
# RAY MARINE



This wireless smart controller will allow you to monitor important information when you're on the deck or away from the instruments. It is compact and light and has a velcro on the back to be able to stick it vertically.



# TOY DESIGN



Everyone knows the popular brand tech deck fingerboards, and everyone knows their ramps, but from this moment the skateparks will start to be sold already assembled! You no longer have to spend so much money to buy ramps and grinds one by one and assemble it yourself. We give you the skatepark in one piece!

